

SCOPEVIEW 3.0™

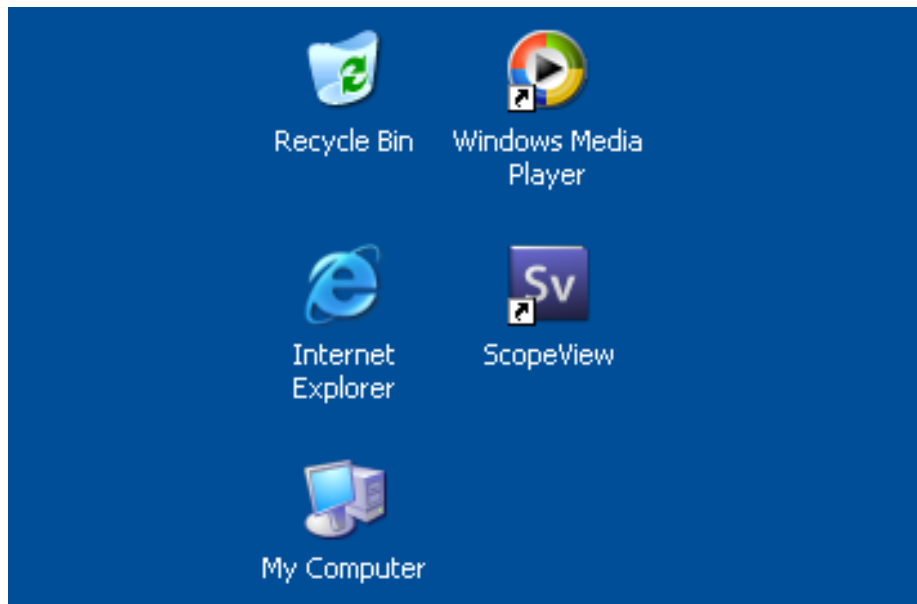
Imaging Software for USB2.0 Microscope Cameras

GETTING STARTED

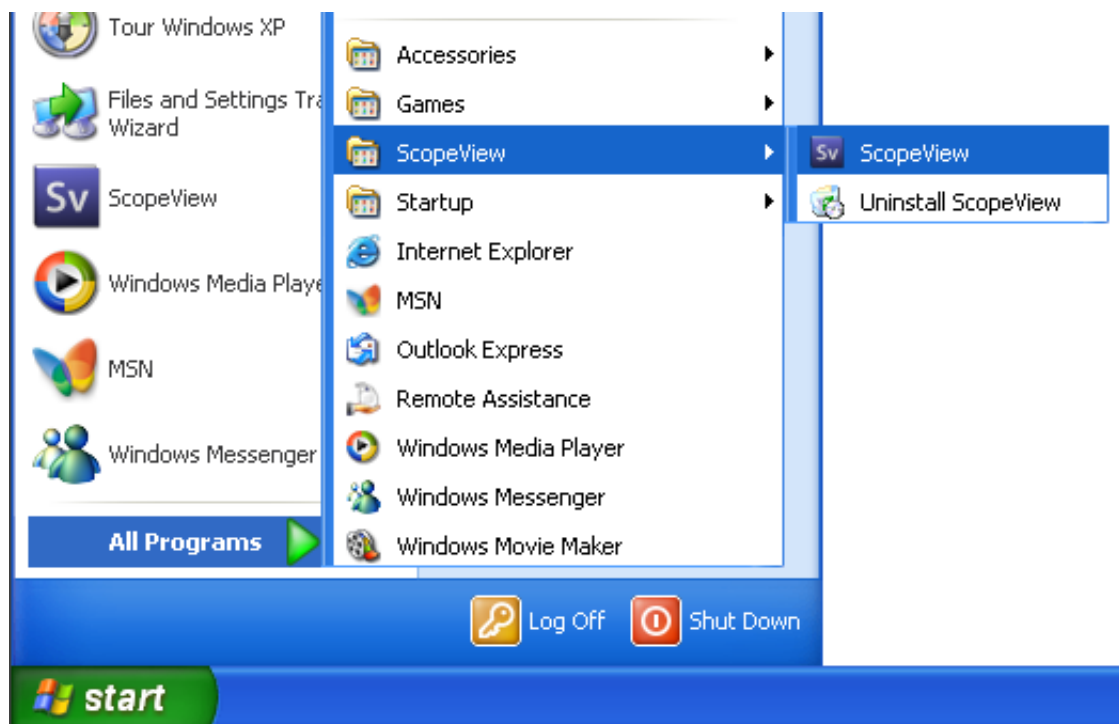
1. Launching ScopeView software
2. Getting a live image
3. Adjusting live image
4. Setting date and time on image
5. Getting a full screen image
6. Capture a single frame
7. Capture a video file
8. Troubleshooting

1. LAUNCHING SCOPEVIEW SOFTWARE

After software installation, a shortcut icon to launch the ScopeView software is created on the desktop.

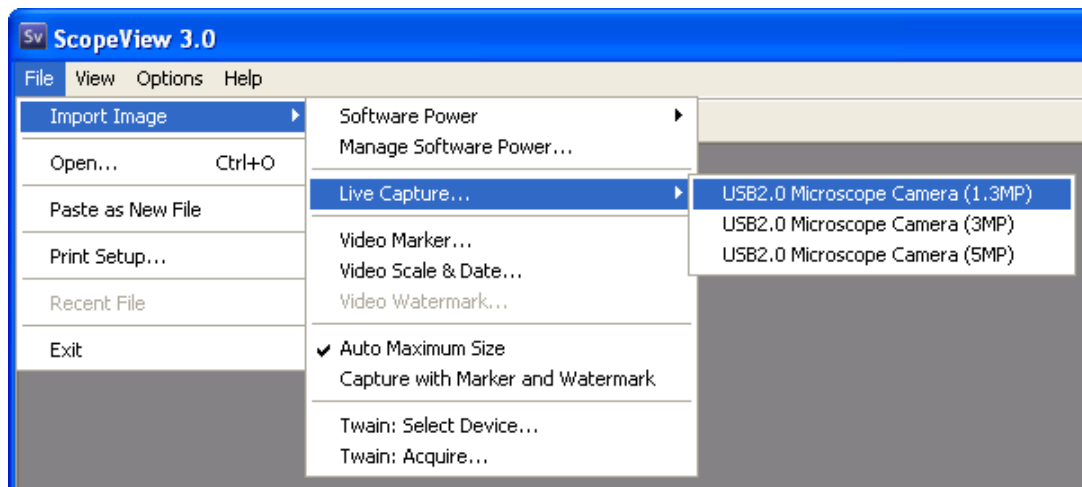


You may also go to **“Start → All Programs → ScopeView”** then select **“ScopeView”** to run the software.




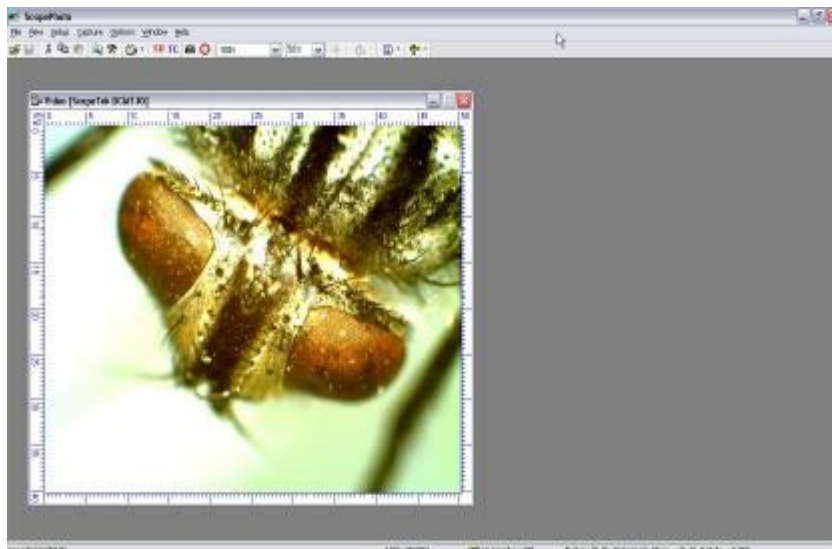
2. GETTING A LIVE IMAGE

Simply select “File” from menu and then select “Import Image → Live Capture → USB2.0 Microscope Camera (1.3MP)”.



Selecting the “USB2.0 Microscope Camera (1.3MP)” will open the live video window.

Alternatively, you may click on toolbar icon  and select “USB2.0 Microscope Camera (1.3MP)”.

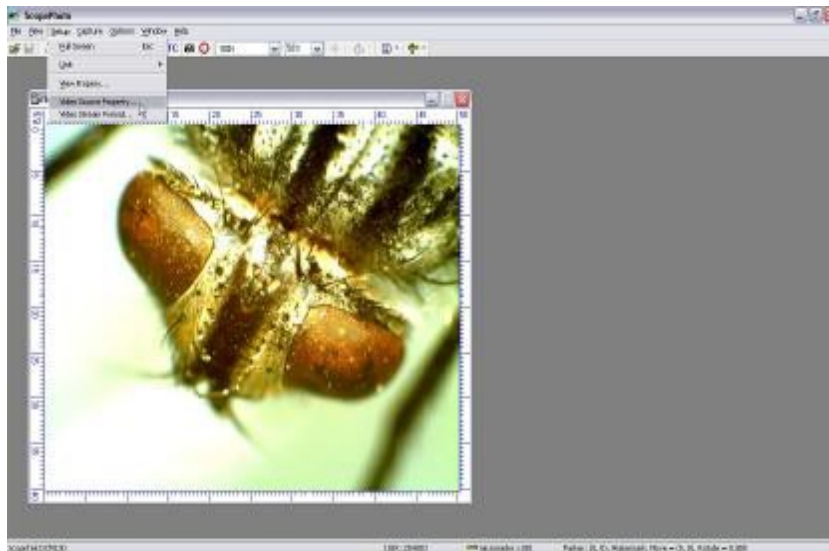


It will take several seconds for the camera to adjust to light etc. At this stage you can get the image in sharp focus (if necessary) using the microscope.

Select Zoom Level  on the toolbar to adjust the view or window size.

3. ADJUSTING THE LIVE IMAGE

ScopeView's default video settings are set to automatic (i.e. exposure controls). In most cases these automatic settings will provide an excellent image. If adjustment is necessary the auto settings can be turned off and manual adjustments can be made. To do this select **“Setup”** from the menu and then select **“Video Source Property”**.



The Properties window allows manual adjustment of brightness, contrast etc. To return to factory settings simply select **“Default”** button. When changes are made, you will see the changes on the live image.

It also allows the live image to be flipped horizontally and vertically to suit the viewer. Depending on your country, select 50Hz or 60Hz for the light frequency.

- **Auto White Balance (WB) Adjustment**

Empty the microscope stage so it will be an empty field in the live video window. Click on **“Auto WB Once”** button at the bottom of Properties window to auto adjust white balance for the light.

Properties ✕

SETUP

Color 1.00

Gamma 30

Contrast 100

☒ Color Enhancement Enable

Saturation 100

Exposure

☒ AE 100

Target 35.1ms

Time 20

Gain 20

Manual WB

R 1.16

G 1.00

B 1.50

Auto WB Once

Frame Rate

☒ Normal Speed

☐ High Speed

Power Frequency

☒ 50HZ

☐ 60HZ

Other

☐ Flip Vertical

☐ Flip Horizontal

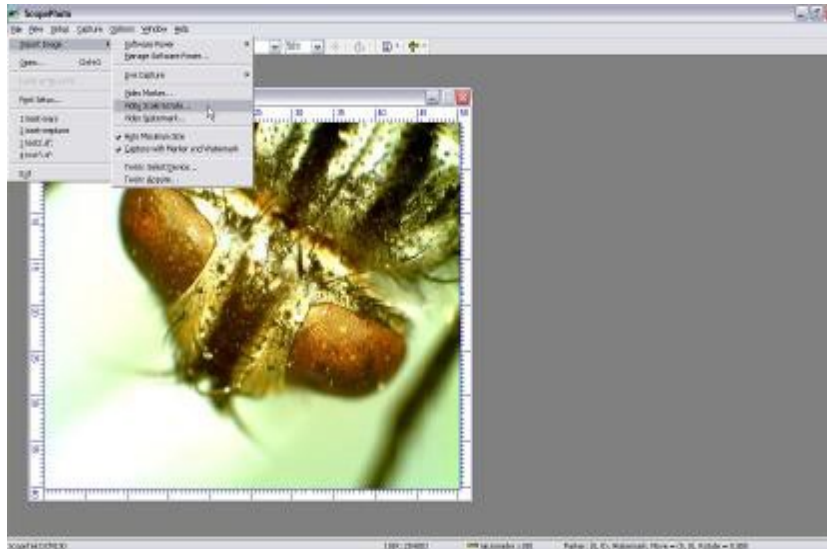
☐ Black/White

Default

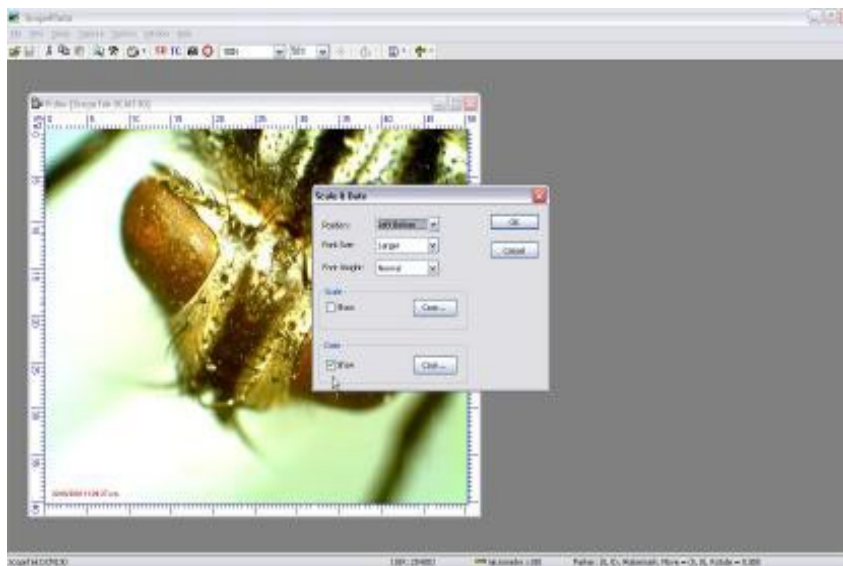
OK Cancel Apply

4. SET DATE AND TIME ON IMAGE

The date and time (taken from the computer's clock setting) can be setup on the live image. If an image is captured, the date and time will also be captured. Select **"Import Image"** from the **"File"** menu and then select **"Video Scale and Date"**.



The scale and date window allows you to turn the date and time on and off as well as adjust position on the image, font size, font weight and colour.



5. GETTING A FULL SCREEN IMAGE

To view a full screen of the live windows simply press ESC. To return the view to the original position press ESC again.



6. CAPTURE A SINGLE FRAME

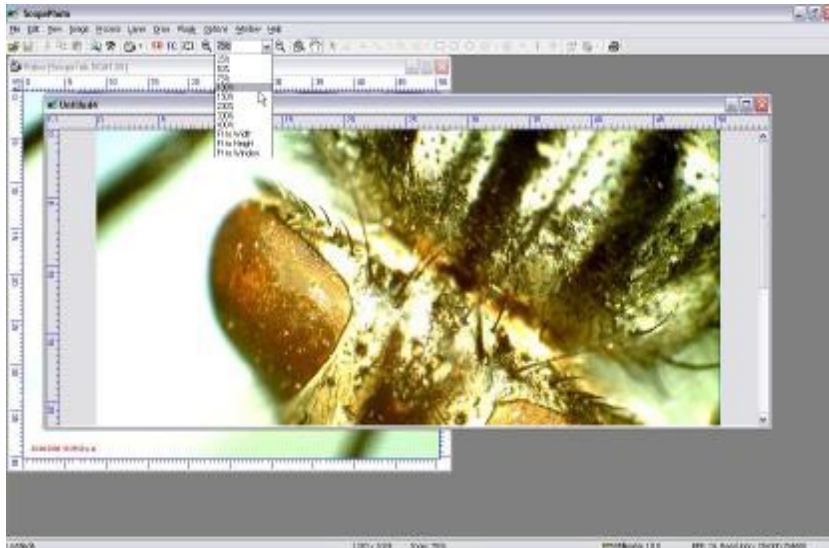
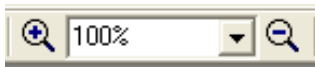
Capturing a single video frame can be done in two ways. Go to the “**Capture**” menu and select “**Capture a Frame**”.



Alternatively, clicking the Camera icon  will automatically capture a single video frame.



Once the image is captured you can adjust the view of the captured image by the Zoom Tool on toolbar.



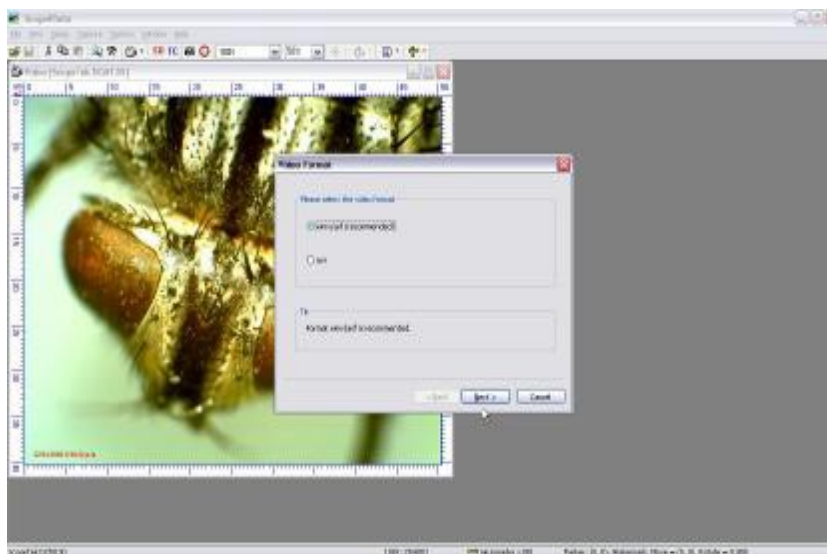
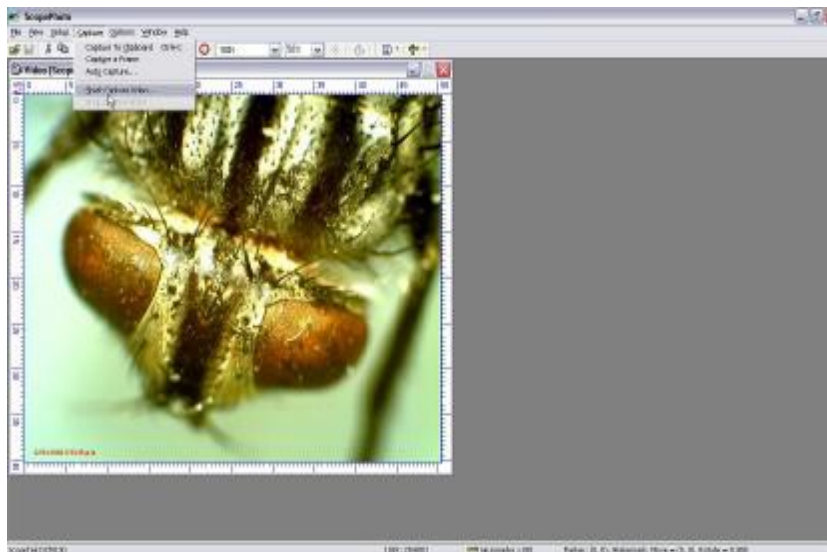
Save the image by selecting **“Save As”** from the **“File”** menu. A variety of file types are available including .bmp, .jpg, .tif.



The captured image can also be printed. Select **“Print”** or **“Print Preview”** from the **“File”** menu.

7. CAPTURE A VIDEO FILE

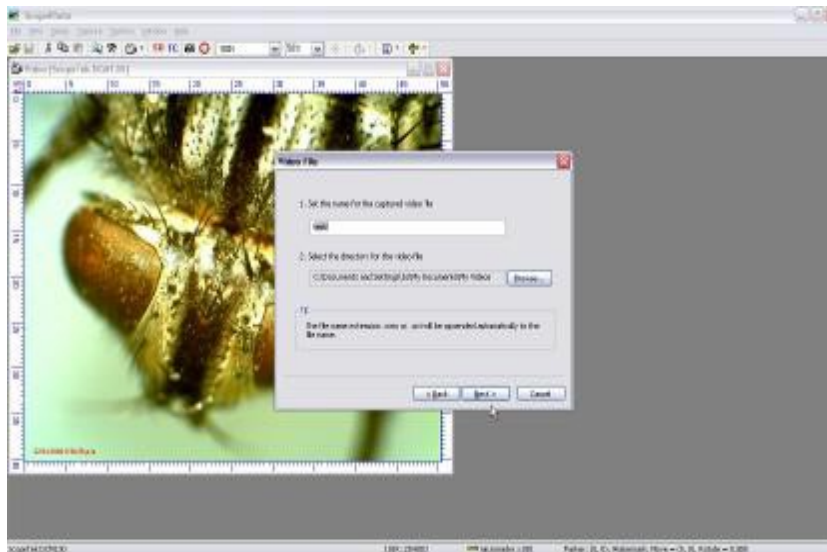
Select “**Start Capture Video**” from the “**Capture**” menu



Select the video format. Windows .wmv format is recommended but .avi format is available if preferred.

Click “**Next**”

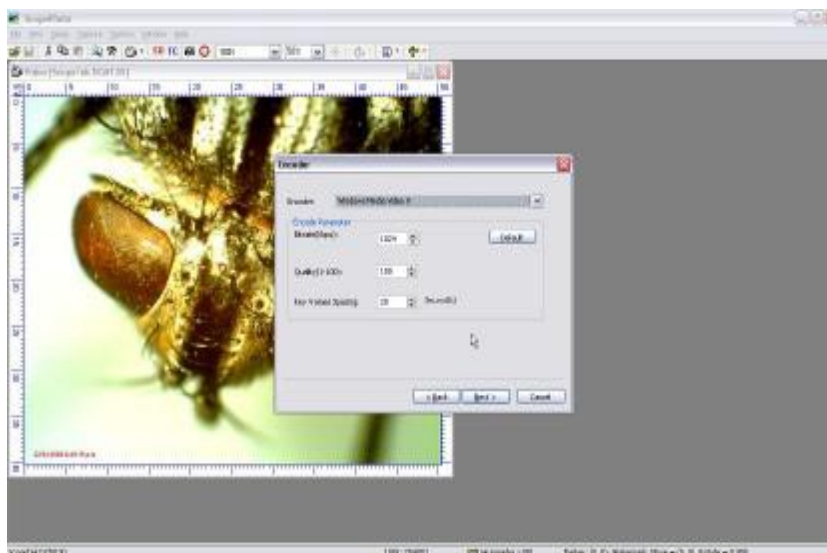
Enter a name for the video file to be captured, then select the directory/ folder where the captured file will be saved.



Click “Next”.

Select Windows Media Encoder. Later model computers running WIN2000, XP or VISTA will support Windows Media 9 Series. If you are unsure, check on the Microsoft website:

<http://www.microsoft.com/windows/windowsmedia>



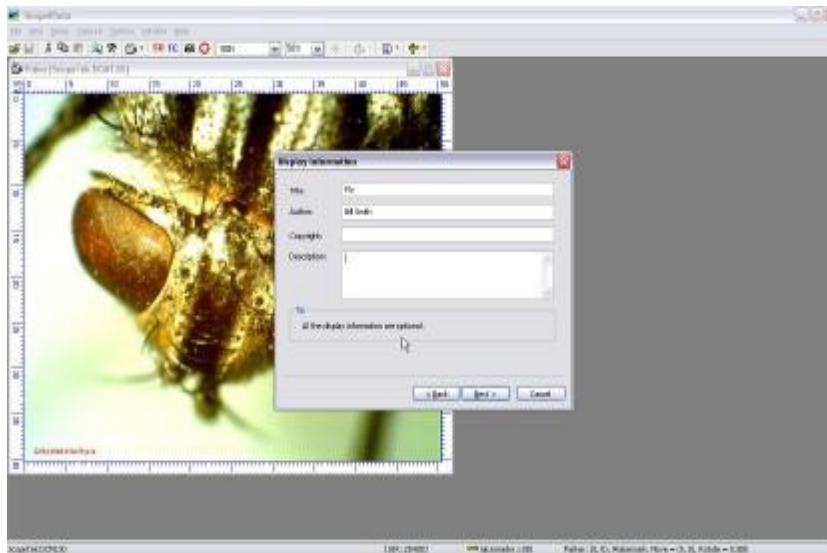
Parameters:

Bitrate (kbps):	the higher the rate, the better the quality
Quality (1-100):	quality of video - generally quality loss will only be noticeable below 70%
Key Frames Spacing:	for video editing

Note: Default parameters will provide good results for most video capture.

Click “**Next**”.

Complete display information if required. Click “**Next**”.



Set time limit for capture. Capture will stop automatically at this time limit.

Click “**Finish**” - capture of video will commence.

Note: Capture can be stopped manually by going to the “**Capture**” menu and selecting “**Stop Capture Video**”.

Video file will be automatically saved to folder/file name setup previously.

8. TROUBLESHOOTING

● USB Device Conflicts

When a number of USB devices are installed at the same time, unexpected errors can arise. The cause can be insufficient available USB bandwidth, or possibly too much combined current being drawn by USB devices.

To test for these conditions you should uninstall and unplug as many other USB devices as possible. This should help to rule out the above, and eliminate possible conflicts with other cameras.

If you are using an extended USB cable, please make sure the cable's bandwidth is good enough to support High-Speed USB 2.0 standard.

Apart from hardware, there might be unknown driver conflicts. In such case, remove camera driver at Device Manager and re-install it.

● Image Preview/Capture Problems

If you can preview the image but cannot capture it ("**Capture a Frame**" icon is grayed out) or get a black screen with DirectShow Capture, check the display settings of your PC and make sure it is on "**32-Bit True color**".

Try also updating to the DirectX9.0 or later version from Microsoft:

Microsoft Download Center

<http://www.microsoft.com/downloads/>

DirectX End-User Run-time

<http://www.microsoft.com/downloads/en/details.aspx?FamilyID=2da43d38-db71-4c1b-bc6a-9b6652cd92a3>

● Slow frame rate & color noise on screen

Video Size: Use smaller size video mode will get faster frame rate. Select "**Setup**" from menu then "**Video Size**", available video size (resolution mode) options will appear.

Light Intensity Setting: Brighter illumination will increase the frame rate of the video and reduce color noise.